

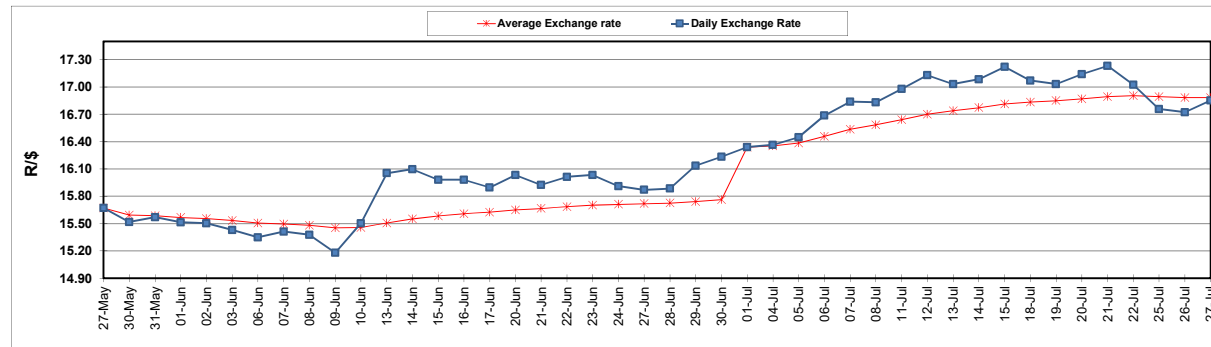
	PETROL 95 ULP	PETROL 93 ULP & LRP	DIESEL 0.05%	DIESEL 0.005%	ILL. PAR.
GAUTENG PUMP PRICE (SA c/l) AS FROM 06/07/2022	2,674.000	2,631.000	-	-	-
WHOLESALE PRICE (SA c/l) AS FROM 06/07/2022	-	-	2,540.440	2,552.840	1,986.288
SINGLE NATIONAL MAXIMUM RETAIL PRICE	-	-	-	-	2,623.000
BASIC FUEL PRICE - 27/07/2022 (SA c/l)	1,375.077	1,342.576	1,516.955	1,527.499	1,563.909
PRESS RELEASE CONTRIBUTION TO BFP 06/07/2022 - 27/07/2022 (SA c/l)	1,689.410	1,646.410	1,763.630	1,776.030	1,768.128
UNIT OVER/(UNDER) RECOVERY - 01/07/2022 (SA c/l)	314.333	303.834	246.675	248.531	204.219
AVERAGE BASIC FUEL PRICE 01/07/2022 - 27/07/2022	1,457.497	1,420.612	1,577.632	1,587.084	1,598.167
AVERAGE UNIT OVER/(UNDER) RECOVERY 01/07/2022 - 27/07/2022	203.176	200.219	161.367	164.473	143.751

ANALYSIS MOVEMENT OF AVERAGE OVER/(UNDER) RECOVERY

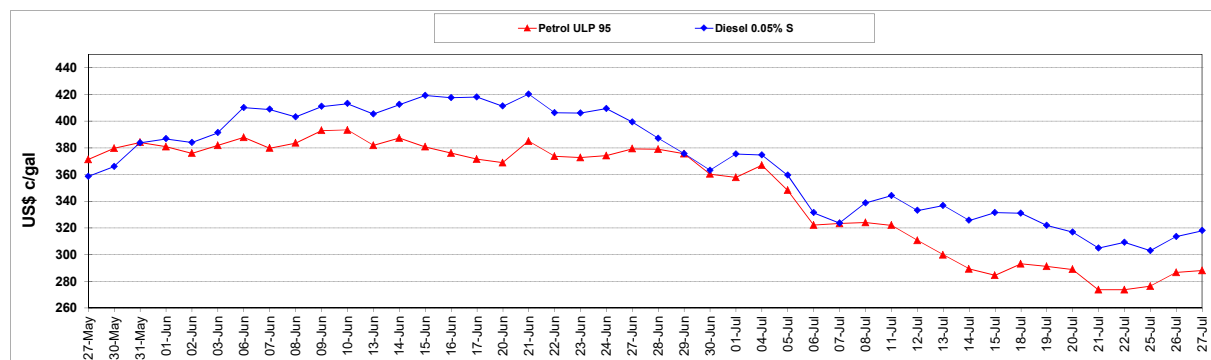
	PETROL 95	PETROL 93	DIESEL 0.05%	DIESEL 0.005%	ILL. PAR.
- MOVEMENT IN INTERNATIONAL PRODUCT PRICES	299.836	294.433	265.993	269.726	249.739
- MOVEMENT IN EXCHANGE RATE	(96.660)	(94.214)	(104.627)	(105.254)	(105.989)
AVERAGE UNIT OVER/(UNDER) RECOVERY 01/07/2022 - 27/07/2022	203.176	200.219	161.367	164.473	143.751

R/\$ EXCHANGE RATE - (R/\$16.8500 - 27/07/2022)

EXCHANGE RATE USED IN BASIC FUEL PRICE



INTERNATIONAL PRODUCT PRICES OF BASKET USED IN BASIC FUEL PRICE



BASIC FUEL PRICE IN SA CENTS PER LITRE

